



Automated Tool Wear Compensation

ELIMINATES OPERATOR DATA-ENTRY ERRORS

Use any gauging device to provide dimensional measurements and AutoComp will calculate the necessary tooling adjustments, and automatically compensate offsets in the CNC control.

Parts can be measured with any gauging equipment including CMMs, digital tooling, gauge fixtures with LVDTs, laser micrometers, vision systems and wireless gauging devices.

**ERROR-FREE TOOL
OFFSET CONTROL**

**GAUGE DATA
PROCESSING**

**TOOL LIFE
MANAGEMENT**

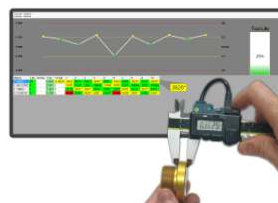
HOW DOES IT WORK?



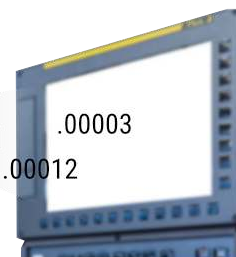
Parts are machined



Parts are measured using any electronic gauging device



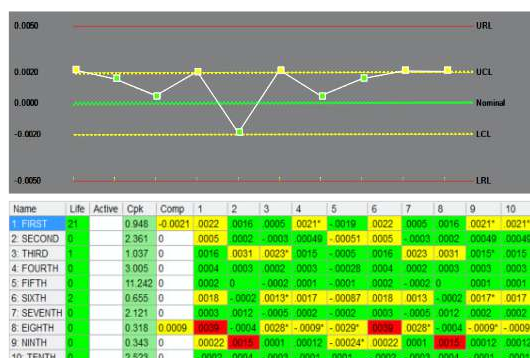
AutoComp reads the measurement file and determines if compensation is required



AutoComp calculates and updates offsets in the CNC control

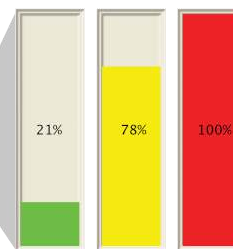
RUN-TIME DISPLAY

- Part is Good
- Compensation Required
- Out of Tolerance



REAL TIME DATA

HISTORICAL PART DATA



TOOL LIFE USED

FEATURES



COMPILES AND REPORTS HISTORICAL TOOL WEAR MEASUREMENTS

- All measurement and compensation data are saved to a file, and time stamped for future analysis.
- The operator receives real-time status of the useful life for each tool.

REPORTS WHEN A TOOL CHANGE IS NEEDED

- When tool compensation has exceeded a user-defined threshold, a wear-limit is issued, informing the operator that the tool needs to be changed.
- A signal can be sent to the CNC control to automatically call a redundant tool or stop the machine before the next cycle.

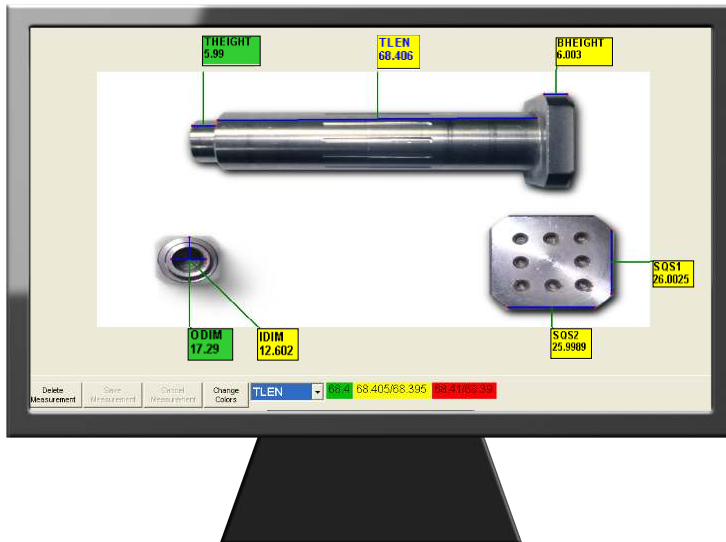
MAINTAINS ACCEPTABLE TOLERANCES OF MACHINED PARTS

- Statistically controls your tool offsets to maintain acceptable tolerances of your machined parts.
- Calculates tool compensation based on tolerance limits and tool compensation limits.

ACCEPTS MEASUREMENTS FROM WIFI GAUGING DEVICES

- Wireless data entry allows the operator to measure and simultaneously transmit the data.
- AutoComp automatically compensates tool offsets, without manual data input.

PARTVIEW



PARTVIEW MAKES OFFSET STATUS MORE INTUITIVE

- Enables the importing of a JPG image of the part directly into AutoComp.
- Allows the operator to more easily identify which area of the part will be compensated.
- Labels can be added to each area of the part being measured for deviation.

OTHER PRODUCTS FROM CARON ENGINEERING



All CEI products are **MTConnect** compliant

www.caroneng.com

Caron Engineering, Inc.
116 Willie Hill Rd.
Wells, Maine 04090 USA

P +1 (207) 646 - 6071
E marketing@caroneng.com



MADE IN THE U.S.A.